



## TOUR LIST

# NORTH BALI TOUR (Fulldaytour)

## PURA ULUN DANU BRATAN



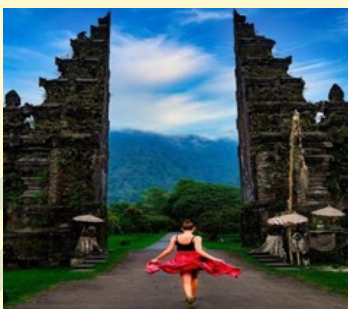
## TWIN LAKE VIEW



## BANYUMALA WATERFALL



## HANDARA GATE



# NORTH BALI TOUR (Full day tour)

PRICE IS : IDR 1.200.000/car/10Hours  
START AT : 9.00 am

**PURA ULUN DANU BRATAN** Pura Ulun Danu Bratan, or Pura Bratan, is a major Shivaite and water temple on Bali, Indonesia. The temple complex is located on the shores of Lake Bratan in the mountains near Bedugul. Water temples serve the entire region in the outflow area; downstream there are many smaller water temples that are specific to each irrigation association (subak).

**TWIN LAKE VIEW** Twin lake view, Lake Buyan and Lake Tamblingan, separated by a rainforest-covered hill, are known as the Twin Lakes. This sight is a great overview of the volcanic heart of Bali. Volcanoes have created and shaped this island, creating volcanic cones and lakes, and producing rich soils enabling a lush forest to grow. Lake Buyan (on the left here) is Bali's second biggest lake, after Lake Batur.

**BANYUMALA WATERFALL** Banyumala waterfall, is one of beautiful waterfall located in Buleleng Regency, is a natural place that some water flow from the water springs and falling on the edge of valley creating a waterfall. It located in Wanagiri Village who has many spots of natural springs. The waterfall surrounded by greenery valley and has natural atmosphere.

**HANDARA GATE** The Bali Handara Gates is actually the entrance to a golf resort. The traditional Hindu gate symbolises the entrance from the outer world to the temple, or in this case, golf course, and plays an important role in Indonesian culture, particularly in Bali. Located in Pancasari Village which is only 10 minutes from Pura Ulundanu Beratan.



# **RICE PADDY TOUR(Halfday 5 hours)**

## **TEGALLALANG**



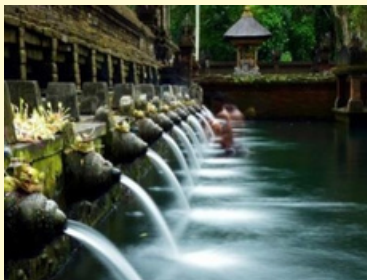
## **COFFEE PLANTATION**



## **GUNUNG KAWI TAMPAKSIRING**



## **TIRTA EMPUL**



# RICE PADDY TOUR(Halfday 5 hours)

Price is : IDR 600.000nett/car/4-5 hours  
Inclusion : Gasoline, Driver Fee, Parking Fee, Mineral Water  
Start : On request

**TEGALLALANG RICE TERRACE** Tegallalang countryside is located at 5 km northern part of Ubud Village and own the magnificent view of rice terrace . The rice terrace is designed very beautiful with exquisite hollowing rice field and precisely located on the hill .in this place ,you will see the Balinese farmer do their rice field in the oblique area complete with its system irrigation. You will enjoy the beautiful panorama of valley with rice terrace and coconut tree ornament it. Tegallalang Rice Terrace is one of tourist icons in Ubud Bali and many Visited by tourists every day.

**COFFEE PLANTATION** Luwak Coffee or Civet Coffee , coffe made from coffee cherries which have been eaten by and passed through the digestive track of the Asian palm Civet .After collated roast so as not destroy the complex flavors that develop trough the process.this coffee luwak process takes place only on island of Bali. Java and Sumatra.

## **GUNUNG KAWI TAMPAKSIRING [ ROKKY TEMPLE]**

Attraction is A Kawi Mountain sculptured temples in the coral cliff in the trust as a place ashes king-king Bali who had died.Gunung kawi is one our cultural heritage in the form of sculpture Bali temple Bali location attraction that one does away with attraction seem siring known as a source of holly water in the trust as a place of purification. TIRTA EMPUL – HOLY SPRING WATER TEMPLE Tirta Empul or Tampak Siring Temple is a holy spring water temple located in tampak siring village ,Gianyar regency about 39 km eastwards from Denpasar town.it is set in the dale and encircled by the hill. In the west site of temple, there is an Indonesian President palace which has been found by the first president. The name tirta empul is loaded in a inscription which is kept at sakenan temple, manukaya village, sub district of tampak siring, about 3 km from tirta empul temple. In this inscription, the tirta empul is named by tirta ri air hampul and then the name has changed into tirta hampul and finally become the tirta empul.tirta ri air hampul is meaning the water emerge or holy pool

# TANAH LOT SUNSET TOUR

## LODTUNDUH VILLAGE



## TAMAN AYUN TEMPLE



## TANAH LOT TEMPLE



# TANAH LOT SUNSET TOUR

PRICE IS : IDR 900.000/car/8 Hours  
START AT : 13:00

**LODTUNDUH VILLAGE** Paintings of Bali have experienced remarkable evolution. Traditional another means of expressing religious and mythological ideas, painting of Bali have been subjected to a number of influences, including deep interaction with Western painter who came and lived in Bali.

**TAMAN AYUN TEMPLE** Taman Ayun Temple is a Royal Temple of Mengwi Empire and it is located in Mengwi Village, Mengwi sub district, Badung regency and about 18 Km north side of Denpasar town. It is strategically located beside of major roadway between Denpasar to Singaraja. It is set on the land which is surrounded by the big fish pond and look like a drift on the water. It owns the beautiful temple building with multistoried roof and Balinese Architecture. The wide beautiful landscape garden in front courtyard to welcome all visitors who come and visit this temple. It is a beautiful place to visit on your vacation in Bali.

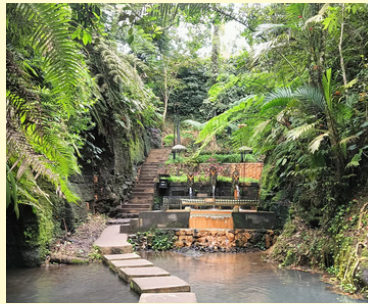
**TANAH LOT TEMPLE** An excessively popular day trip, Pura Tanah Lot is the most visited and photographed temple in Bali, especially at sunset when crowds and traffic overwhelm the site. However, it has all the authenticity of a stage set – even the tower of rock that the temple sits upon is an artful reconstruction (the entire structure was crumbling) and over one-third of the rock is artificial. For the Balinese, Pura Tanah Lot is one of the most important and venerated sea temples. Like Pura Luhur Ulu Watu, at the tip of the southern Bukit Peninsula, and Pura Rambut Siwi to the west, it is closely associated with the Majapahit priest Nirartha. It's said that each of the sea temples was intended to be within sight of the next, so they formed a chain along Bali's southwestern coast – from Pura Tanah Lot you can usually see the clifftop site of Pura Ulu Watu far to the south, and the long sweep of sea shore west to Perancak, near Negara.

# KINTAMANI TOUR

## TEGALLALANG RICE TERRACE



## ULU PETANU WATERFALL



## TIRTA EMPUL



## LUWAK COFFEE



## KINTAMANI VIEW POINT



# KINTAMANI TOUR

PRICE IS : IDR 900.000/car/8 Hours

START AT : 08:00 am

**TEGALLALANG RICE TERRACE** Tegallalang countryside is located at 5 km northern part of Ubud Village and own the magnificent view of rice terrace . The rice terrace is designed very beautiful with exquisite hollowing rice field and precisely located on the hill .in this place ,you will see the Balinese farmer do their rice field in the oblique area complete with its system irrigation. You will enjoy the beautiful panorama of valley with rice terrace and coconut tree ornament it. Tegallalang Rice Terrace is one of tourist icons in Ubud Bali

**ULU PETANU WATERFALL** This excursion starts by visiting Ulun petanu Waterfall as one of the best river waterfall on the island of Bali. This waterfall is exactly located in Petanu river . Although this river waterfall is not so high (about four feet tall), however the water flow is quite heavy and the water is clean and clear. The natural environment of the area is so fantastic with beautiful green vegetation beautified the scenery.

**TIRTA EMPUL** Tirtha Empul Temple is a Hindu Temple located in a valley between two hills with big springs and sacred by the local residents as a place to melt all the bad influences in the body and purifies the soul and mind. Tirtha Empul Temple or better known as Tampak Siring Temple or Holy Water Temple is a place to purify our self from the bad influences in life where we can discover the traditional showers sourced from the springs at this temple. The water that comes out from the shower is believed to eliminate all kind of diseases including adverse effect in the human life and give the new holy spirits.

**LUWAK COFFEE** Kopi is the Indonesian word for Coffee. Luwak is a local name of the Asian palm civet in Sumatra. Kopi Luwak or civet coffee, is coffee made from the beans of coffee berries which have been eaten by the Asian Palm Civet (*Paradoxurus hermaphroditus*) and other related civets, then passed through its digestive tract. A civet eats the berries for their freshy pulp.

**KINTAMANI VIEW POINT** Kintamani is the most favorite tourist destinations in Bali with the active volcano of mount Batur and beautiful lake. Kintamani is surrounded by the captivating nature and there are six ancient villages around cauldron of Batur Lake which is often conceived by Bali Age Village. The local people from these Bali Age villages own the unique cultures, houses and life style. The total of resident in these area are about 15 thousand who are mostly working as farmer, merchant, or work at industrial tourism.

# UBUD TOUR

## TEGALLALANG RICE TERRACE



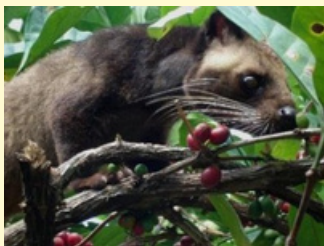
## TIRTA EMPUL



## GUNUNG KAWI



## LUWAK COFFEE



# UBUD TOUR

Price is : IDR 700.000/car/5-6 hours  
Start at : 08:00 am or 09:00 am

**TEGALLALANG** Tegallalang countryside is located at 5 km northern part of Ubud Village and own the magnificent view of rice terrace . The rice terrace is designed very beautiful with exquisite hollowing rice field and precisely located on the hill .in this place ,you will see the Balinese farmer do their rice field in the oblique area complete with its system irrigation. You will enjoy the beautiful panorama of valley with rice terrace and coconut tree ornament it. Tegallalang Rice Terrace is one of tourist icons in Ubud Bali and many Visited by tourists every day.

**TIRTA EMPUL [ HOLY SPRING TEMPLE]** Tirta Empul is an important temple complex and holy mountain spring, located in the village of Manukaya in central Bali. The site serves as a legendary setting of a traditional tale about good versus evil. It is also a national cultural heritage site.The complex, built circa 960 AD, is also a silent witness to the old Balinese kingdom years, particularly at the time of the Warmadewa Dynasty. Another nearby and prominent site on top of a hill is the presidential palace, Istana Tampaksiring, built during the years of the nation's first president, Soekarno.

**GUNUNG KAWI [ ROKKY TEMPLE]** Gunung Kawi is a Hindu Temple complex with old omission from the stone era located in Gianyar regency. Based on the inscription of Tengkulak A on 945 saka (Balinese calendar) which is released by Marakata King, the ancient omission complex is located at the Pekerisan River then it is called Katyangan Amarawati. Pekerisan River is also named by Jalu which is according to the inscription chiseled on the above of the biggest temple door sound 'Haji Lumahing Jalu'. The name of Gunung Kawi is the name given on the omission which is related to the complex of temples because the temple on this area is like the symbol from the mount. There are 3 temples which so called the name as Gunung Kawi in Bali those are Gunung Kawi in Sebatu countryside, Gunung Kawi Temple in Keliki countryside and Gunung Kawi Temple in Babitra countryside. The ancient omission complex of Gunung Kawi is founded on 10 century. It is founded in the era of Udayana about 989 M. At the period of Marakata governance on 1023, the omission which is called Katyagan Amarawati is developed and continued by the governance of Anak Wungsu which is guess lead between the years of 1049 - 1077 M.

**COFFEE LUWAK** Luwak Coffee or Civet Coffee , coffee made from coffee cherries which have been eaten by and passed through the digestive track of the Asian palm Civet .After collated roast so as not destroy the complex flavors that develop trough the process. This coffee luwak process takes place only on island of Bali. Java and Sumatra.

# TRADITIONAL VILLAGE TOUR

## TEGALLALANG



## TIRTA EMPUL



## COFFEE PLANTATION



## PENGLIPURAN



## KEHEN TEMPLE



# TRADITIONAL VILLAGE TOUR

Price is : IDR 700.000/car/6 Hours

Start : 09:00 am

**TEGALLALANG** Tegallalang countryside is located at 5 km northern part of Ubud Village and own the magnificent view of rice terrace . The rice terrace is designed very beautiful with exquisite hollowing rice field and precisely located on the hill .in this place ,you will see the Balinese farmer do their rice field in the oblique area complete with its system irrigation. You will enjoy the beautiful panorama of valley with rice terrace and coconut tree ornament it. Tegallalang Rice Terrace is one of tourist icons in Ubud Bali and many Visited by tourists every day

**TIRTA EMPUL [ HOLY SPRING TEMPLE]** Tirta Empul is an important temple complex and holy mountain spring, located in the village of Manukaya in central Bali. The site serves as a legendary setting of a traditional tale about good versus evil. It is also a national cultural heritage site. The complex, built circa 960 AD, is also a silent witness to the old Balinese kingdom years, particularly at the time of the Warmadewa Dynasty. Another nearby and prominent site on top of a hill is the presidential palace, Istana Tampaksiring, built during the years of the nation's first president, Soekarno.

**COFFEE LUWAK** Luwak Coffee or Civet Coffee , coffee made from coffee cherries which have been eaten by and passed through the digestive track of the Asian palm Civet .After collated roast so as not destroy the complex flavors that develop trough the process. This coffee luwak process takes place only on island of Bali. Java and Sumatra.

**PENGLIPURAN** Penglipuran Village is a traditional countryside owning unique characteristic life, socializing and culture. It is located in Kubu Village , Bangli Sub district and Bangli Regency. The natural nature and environments of countryside is designating the pittance touch of modernization influence. This countryside is supported by cool atmosphere because it is located on the height land about 700 m above sea level and according to history of all old doyens that this countryside is taken away from the word Pengeling Pura what its meaning remember to ancestor, but there is also telling that the word of Penglipur mean the entertainer. It is said that at former empire era, all king often use this area as a place to amuse themselves, because its nature is beautiful and can give the peacefulness and inspiration at the time of experiencing a problem.

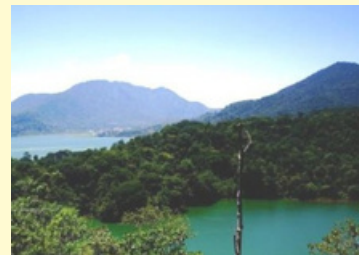
**KEHEN TEMPLE** Kehen Temple is a beautiful Hindu temple located in foothills, south part of Bangli Regency and it is about 45 Km from Denpasar town. Inside of this temple are, there is Panyimpenan Temple building keep 3 inscriptions which is relating to its contents and temple existence. It is strategically located in the high land, so we can see the beautiful view. It is a famous temple in Bali and many visitors from foreign country has visited it.

# LOVINA DOLPHIN TOUR

## LOVINA BEACH



## TWIN LAKE VIEW



## HANDARA GATE




## PURA ULUN DANU BRATAN



# LOVINA DOLPHIN TOUR

PRICE IS : IDR 1.200.000/car/8 - 10 Hours  
START TIME : 03:30 am (Early Morning)

**LOVINA BEACH** Lovina Beach including coastal attractions in North Bali. Exactly 10 km to the west of Singaraja. Its location in Kalibukbuk Village, Buleleng, Bali. Therefore, better known as a tourist attraction Kalibukbuk. Lovina black sand beaches are still very natural, so as to attract tourists. A trip to the sea waters of Lovina is very interesting to visit. You can see dolphins around 1 km from the beach. Lovina relatively calm sea that can be traveled by boat shermen.

**TWIN LAKE VIEW** Lake Buyan and Lake Tamblingan, separated by a rainforest-covered hill, are known as the Twin Lakes. This sight is a great overview of the volcanic heart of Bali. Volcanoes have created and shaped this island, creating volcanic cones and lakes, and producing rich soils enabling a lush forest to grow. Lake Buyan (on the left here) is Bali's second biggest lake, after Lake Batur.

**HANDARA GATE** The Bali Handara Gates is actually the entrance to a golf resort. The traditional Hindu gate symbolises the entrance from the outer world to the temple, or in this case, golf course, and plays an important role in Indonesian culture, particularly in Bali. Located in Pancasari Village which is only 10 minutes from Pura Ulundanu Beratan

**PURA ULUN DANU BRATAN** Pura Ulun Danu Bratan, or Pura Bratan, is a major Shivaite and water temple on Bali, Indonesia. The temple complex is located on the shores of Lake Bratan in the mountains near Bedugul. Water temples serve the entire region in the outflow area; downstream there are many smaller water temples that are specific to each irrigation association (subak).

# BESAKIH TOUR

## TIRTA EMPUL TEMPLE



## COFFEE PLANTATION



## KINTAMANI VIEW POINT



## BESAKIH TEMPLE



# BESAKIH TOUR

PRICE IS : IDR 900.000/car/ 8 Hours  
START AT : 09:00 am

**TIRTA EMPUL** Tirtha Empul Temple is a Hindu Temple located in a valley between two hills with big springs and sacred by the local residents as a place to melt all the bad influences in the body and purifies the soul and mind. Tirtha Empul Temple or better known as Tampak Siring Temple or Holy Water Temple is a place to purify our self from the bad influences in life where we can discover the traditional showers sourced from the springs at this temple. The water that comes out from the shower is believed to eliminate all kind of diseases including adverse effect in the human life and give the new holy spirits. This place is very famous in Bali and many visited by local people and tourists every day since it has been appointed as one of the tourist destinations in Bali

**LUWAK COFFEE** Kopi is the Indonesian word for Coffee. Luwak is a local name of the Asian palm civet in Sumatra. Kopi Luwak or civet coffee, is coffee made from the beans of coffee berries which have been eaten by the Asian Palm Civet (*Paradoxurus hermaphroditus*) and other related civets, then passed through its digestive tract. A civet eats the berries for their fleshy pulp.

**KINTAMANI VIEW POINT** Kintamani is the most favorite tourist destinations in Bali with the active volcano of mount Batur and beautiful lake. Kintamani is surrounded by the captivating nature and there are six ancient villages around cauldron of Batur Lake which is often conceived by Bali Age Village. The local people from these Bali Age villages own the unique cultures, houses and life style. Kintamani Area is consisted of some Villages those are Kedisan Village , Buahan, Abang, Trunyan, Songan, South Batur, Middle Batur, North Batur, Sukawana and Kintamani Village . The total of resident in these area are about 15 thousand who are mostly working as farmer, merchant, or work at industrial tourism.

**BESAKIH TEMPLE** Pura Besakih is a temple complex in the village of Besakih on the slopes of Mount Agung in eastern Bali, Indonesia. It is the most important, the largest and holiest temple of Hindu religion in Bali,[1] and one of a series of Balinese temples. Perched nearly 1000 meters up the side of Gunung Agung, it is an extensive complex of 23 separate but related temples with the largest and most important being Pura Penataran Agung. The temple is built on six levels, terraced up the slope. The entrance is an formed by a Candi Bentar (split gateway), and beyond it the Kori Agung is the gateway to the second courtyard.

# EASTERN BALI TOUR

## LEMPUYANG TEMPLE



## TIRTA GANGGA



## TENGANAN VILLAGE



# EASTERN BALI TOUR

Price : Rp 900.000/car/8 Hours  
Start : 03.30 am (Early Morning)

**LEMPUYANG TEMPLE** Lempuyang Temple is one of the older and Holy temple in Bali Island. This temple is located at Bisbis Hill, Abang District, Karangasem Regency. Most of the tourist who are visiting surely have known this island. This temple is well-known for its great gate (or called the Gate of Heaven). Based on Kutara Kanda Dewa Purana Bangsul narrated that Sang Hyang Parameswara carried the mountains in Bali from India (Jambhudwipa) to Mahameru Mount. The pieces of Mahameru Mount was brought to Bali and divided into three big parts and few small parts. However, need to remember that the history of Lempuyang Temple haven't known for sure caused there are still many others history version of this temple.

**TIRTA GANGGA** Tirta Gangga water palace is a former royal palace located in the eastern part of Bali Island, Indonesia, located near Ababi village near Mount Agung, about 6 kilometers north of the town of Amlapura, at a distance of 83 km from Denpasar. The park is famous for its water palace, owned by the Kingdom of Karangasem. Tirta Gangga is a convenient stopover along tour itineraries to Bali's eastern region. Its main entrance and large parking area are easily spotted from the main Amlapura Road. The site is open to the public and a small entrance fee applies which goes towards maintenance. The former royal palace of Tirta Gangga, means that the water in the Palace came from the Gangga River as the Hindu holy river has tiered fountains, tropical gardens, and carvings of mystical creatures that spout water into bathing pools. Just outside the palace area, the lush rice paddies in the northeast of Bali are very stunning. The history of Tirta Gangga Water Palace refers to the water palace built in 1948 by The King of Karangasem, Anak Agung Anglurah Ketut Karangasem. However, this name is also used to refer to the area that includes the water palace along with the lush surrounding countryside. Tirta Gangga Water Castle is a pool of mazes and fountains surrounded by lush gardens and statues. This one-hectare complex was built in 1946 by the late King of Karangasem but was almost completely destroyed by the eruption of Mount Agung in 1963. Then rebuilt and restored. The area around Tirta Gangga is famous for its rice terraces. It is a favorite retreat and some weekends may seem a bit crowded. Besides the many small warung stalls outside of the main site and around the parking area, Tirta Gangga also boasts accommodation facilities and a restaurant, as well as the Tirta Ayu Hotel & Restaurant – located just behind the main fountain. The scenery of Tirta Gangga Water Palace is beautiful with breathtaking views surrounded and the climate is relatively cool.

**TENGANAN VILLAGE** Tenganan Village is one of the oldest Balinese Ancient Villages located in Karangasem Regency, east part of Bali. This Bali traditional village is much referred to by the cultural literature science of Tenganan Pegringsingan, a very famous literature on the island. It owns very unique local community life pattern that is only available in Bali Ancient Villages (Hindu Prehistoric). It is different from other villages existing on this island. Furthermore, Tenganan Village has been appointed as a place for tourist destinations in Karangasem Bali. Moreover, it can present attractive and unique matters which are able to add a variation of objects and fascination for tourists to come.

# WEST TOUR

## TAMAN AYUN TEMPLE



## JATI LUWIH



## BATUKARU TEMPLE



## PEJATEN ( CERAMIC Handmade )



## TANAH LOT TEMPLE



# WEST TOUR

PRICE IS ; IDR 1.000.000/car/8 hours  
START AT :09:00 am

**PURA TAMAN AYUN** [ ROYAL FAMILY TEMPLE] Taman Ayun Temple is a Royal Temple of Mengwi Empire and it is located in Mengwi Village, Mengwi sub district, Badung regency and about 18 Km north side of Denpasar town. It is strategically located beside of major roadway between Denpasar to Singaraja. It is set on the land which is surrounded by the big fish pond and look like a drift on the water. It owns the beautiful temple building with multistoried roof and Balinese Architecture. The wide beautiful landscape garden in front courtyard to welcome all visitors who come and visit this temple. It is a beautiful place to visit on your vacation in Bali.

**JATILUWIH** [ THE BIGGEST RICE TERRACE IN BALI ] Jatiluwih is a favorite tourist destination in Bali famous with the beautiful rice terrace unfolding from the foot of mountain until the coastal side. It is one of places to visit in Bali with the beautiful view as according to its name from Jati and luwih, where Jati mean really and Luwih meaning especial, good, and beautiful or the equivalent. The local paddies are planted in this place look typically of the high relative size plant if it is compared with other pre-eminent paddy planted by most farmers in Bali . Despitefully, Jatiluwih also famous with its organic agriculture system due to the location is located in the in the plateau of Watukaru Mount which is suitable for the agriculture development.

**PURA BATU KARU**[ BATU KARU TEMPLE ] Luhur Watukaru temple or Pura Batukaru is one of the biggest Hindu Temples in Bali (Sad Kahyangan) with Catur Lokapala Temple and Padmabhuwana Temple status. It is set in the plateau area with lush tropical rain forest surround it. It is situated in the peaceful area which is far from the local resident that is ideally for worship. There are some temple building spread out through the tranquility of rain forest and the big mountain of Batukaru as a back drop.

**PEJATEN CERAMIC HANDMADE** Pejaten in Tabanan The calm that hangs over the area. It seems that everyone here, men and women alike, occupy themselves in a lucrative cottage industry that produces clay roof tiles, which are neatly set out in the sun to dry. With Bali's unpredictable weather, particularly during the wet season, all hands must be available to rush the tiles back into the sheds or the rain will damage the half-finish products. Despite the backbreaking work, no one is complaining, as the cottage industry is doing well. Some 600 households in this area earn a living from producing tiles.

**TANAH LOT TEMPLE** Tanah Lot Temple is located in coastal side of Beraban countryside, Kediri sub district and Tabanan Regency. It is situated in 30 Km in west side of Denpasar town and about 11 Km in south side of Tabanan town. The temple is built on the rock with 3 acre size and reachable in a few minute by walk, because it is just 20 meters from the coastal lip. This temple is very famous among tourist destinations in Bali with spectacular view of sunset. At some nooks of coral reef around Tanah Lot Temple there are holy tame snake in black and white color where according to the local society believe that it as a deity property and as the guard of the temple from the bad influence.

# TREKKING BATUR



# TREKKING BATUR

## MOUNT BATUR SUNRISE TREKKING

Mount Batur volcano is one of the sacred mountain according to Hindu believe. Mount Batur is located in Batur village, Kintamani District, Bali, Indonesia. Mount Batur (Gunung Batur) is 1717 m above sea level can be summited by physically fit hikers in around 2 hours. Mount Batur Bali is an active volcano that draws tourists in with both beauty and promise of Bali adventure Tours. We offers climb Mount Batur Bali to enjoy an unforgettable sunrise from the top of an active volcano. Spectacular scenery and the vibration of the sacred earth filling your mind and soul as u served by tasty morning breakfast cooked by the steam of the active volcano. On the way home from the trek we will stop off at a Traditional Bali Coffee Processing or Bali Agrotourism, place to see various Tropical plantations and see how to make Balinese coffee in very traditional process, and we also get to sample of them as well as local herbal teas, coffees and the unusually processed Coffee Luwak, the most expensive coffee in the world. Join us for the amazing trek on the active volcano, Climbing Mount Batur Bali!

### INCLUSION

- Pick up and return to your hotel by private air conditioning car
- Experienced private Trekking guides with English speaking
- Entrance fee to Kintamani area
- Hiking equipment (Flashlight, Etc)
- Breakfast box and mineral water

### WHAT SHOULD YOU BRING

- Hiking shoes or sport shoes
- Warm jacket & long pants
- Camera

PRICE is : IDR 850.000 / Pax (Minimum 2 Pax )



## **BATIK PAINTING WORKSHOP**

2-3 HOURS BATIK CLASS  
COLORING KIT  
100 CM X 50 CM COTTON PABRIC  
BASIC TOOLS

## **MINIATURE KELIKI PAINTING**

2-3 HOURS PAINTING CLASS  
PAPER AND PAPER FRAME  
TOOLS SET  
COLORING KIT

*Only IDR 450.000 / pax*

**Additional return transport 150 k / car**



# Ayung River Rafting

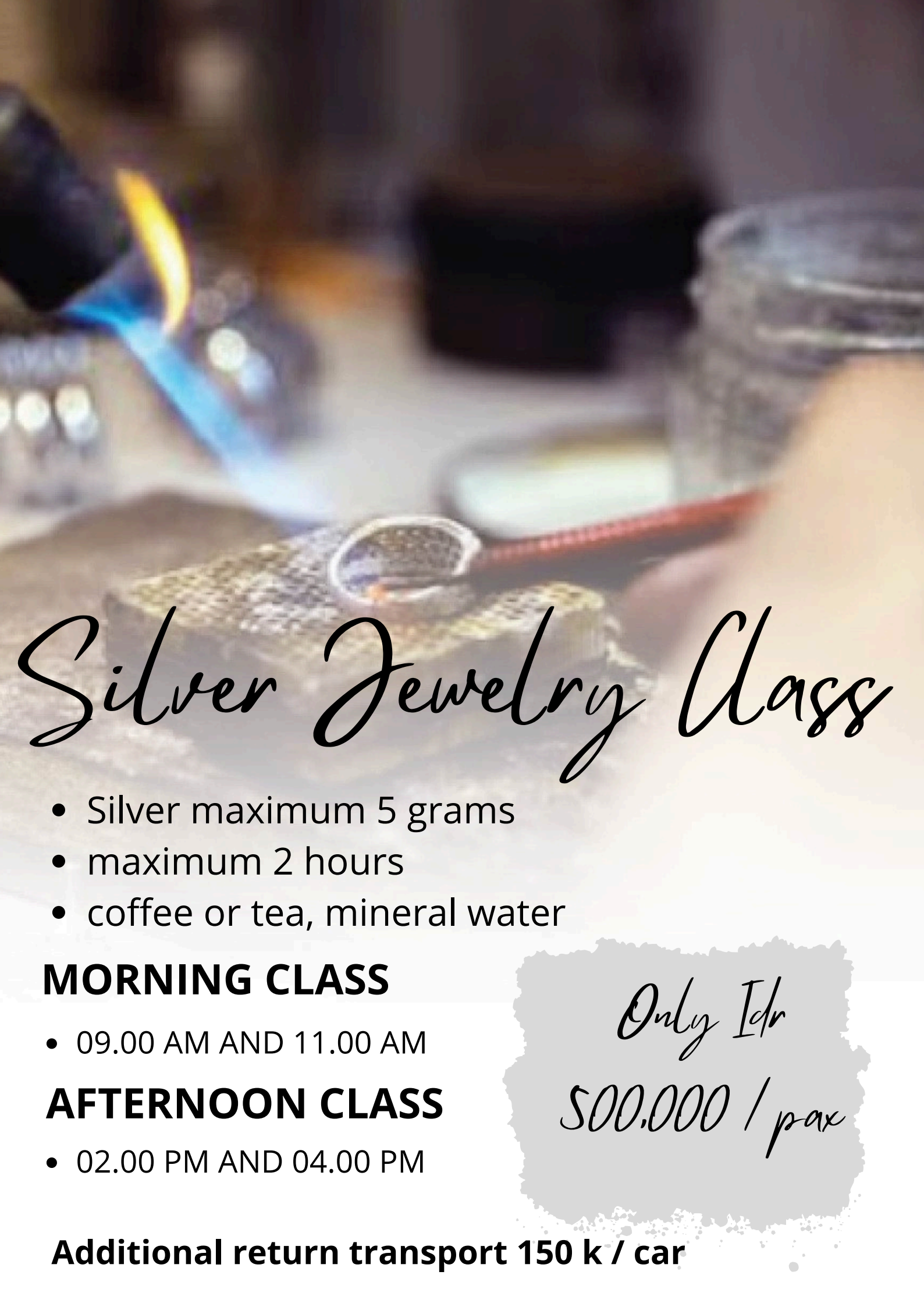
**IDR 600,000 PER PERSON**

## **TRIP INCLUDES:**

**WHITE WATER RAFTING EXPERIENCE IN AYUNG RIVER  
DROP OFF AND PICK UP AT THE STARTING AND FINISH POINT**

**LUNCH**

*Please contact our Reception or dial extension '0' for bookings*



# Silver Jewelry Class

- Silver maximum 5 grams
- maximum 2 hours
- coffee or tea, mineral water

## **MORNING CLASS**

- 09.00 AM AND 11.00 AM

## **AFTERNOON CLASS**

- 02.00 PM AND 04.00 PM

*Only Idr*

*500.000 / pax*

**Additional return transport 150 k / car**



# Ubud Adventure Tour

**SINGLE IDR 2,300,000 /  
COUPLE**      **TANDEM IDR 2,000,000**

ATV SINGLE OR TANDEM  
WATERFALL EXPERIENCE  
COFFEE PLANTATION  
TEGALALANG RICE TERRACE

ENGLISH SPEAKING DRIVER  
COMFORTABLE CAR  
DOCUMENTATION BY ATV TEAM  
FULL DAY TOUR UP TO 8 HOURS

*ATV Single is ride for one person only while Tandem means couple ride in one unit of ATV.*

*Please contact our Reception or dial extension '0' for bookings*



# Jungle ATV Ride

**SINGLE 1,000,000**

**TANDEM 1,500,000**

## **TRIP INCLUDES:**

**JUNGLE ATV RIDE (TANDEM BIKE) DROP OFF AND PICK UP AT THE  
STARTING AND FINISH POINT**

**LUNCH**

*ATV Single is ride for one person only while Tandem means couple ride in one unit of ATV.*

*Please contact our Reception or dial extension '0' for bookings*